

OUTPLAY FILMS presents

A film by CLAUDIO MARCONE

IN THE GRAYSCALE



STORY LINE

Pain, changes and reconstruction of being during an overwhelming present.

Bruno (35) is an architect who has perfect life : He is married, he has a son, a nice house, a nice car, and an architectural firm, not famous for its best designs but it pays the bills. Bruno has a deep sense of unease. He decides to leave his wife to be alone and have time to find himself. A businessman offers him to build an iconic landmark in the city of Santiago. Motivated by this professional challenge, Bruno feels he can find a twist in his life by a vocational route. He starts working with a young history teacher named Fer (29) who is agile, energetic, captivating and gay. It is the beginning of an unexpected, intense and passionate romance, leaving Bruno full of contradictions. At this point he must make decisions for his future. The biggest learning experience being that innocence and simplicity are perhaps the best way to get up again.

CHARACTERS



BRUNO

FRANCISCO CELHAY

He is a 35 years old architect, balanced in his life but not in his emotions. His life is blameless, he has a good job, a family, a traditional education, but always felt this was not his reality. After the separation with his wife Soledad, a separation he struggled to avoid, he meets Fer, a young man who changes his idea of home and family, making him face a late homosexuality. Fer seems to be happy and at ease with himself exactly how he always wanted to be but Bruno's own insecurities leads him to leave this relationship in suspension point...

CHARACTERS

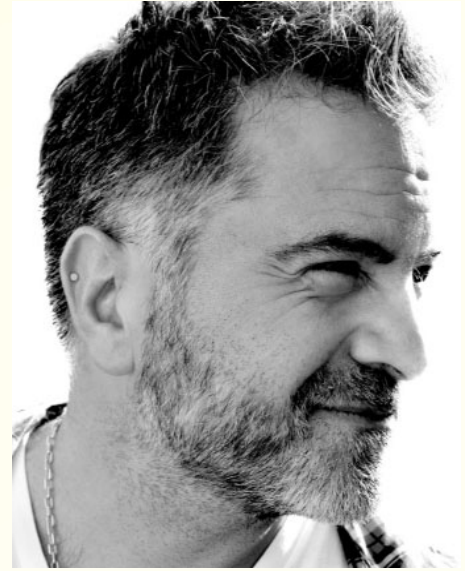


FER

EMILIO EDWARDS

He is a 29 years old history teacher and also works as a tourist guide in Santiago. His knowledge about Santiago leads him to meet Bruno as a consultant for his architectural's project. Fer looks very secure in his personal life. He is very attractive physically, very clear in his feelings, loyal, but not so much empathetic with the insecurities of the others. His natural charm brings Bruno to experiment his first homosexual relationship but it is not a trap, it is real love and an intense surprise of life...

DIRECTOR



CLAUDIO MARCONE

He studied film and television direction, specializing in photography. Working for 20 years in publicity as a director, having worked before as an assistant director and cinematographer. He has also made some video arts and installations in collaboration with other Chilean artists. IN THE GRAYSCALE is his debut as a film director.

PRODUCER

LUIS CIFUENTES

Born in 77 in Chile, LUIS CIFUENTES has created and directed during 10 years the ELCINEVINO project, a successful traveling cinema that, all along Chile, screened national features and animated creative workshops aimed to those who could not access theaters for social, economical or cultural reasons. Since 2009, he is working on developing his own career as producer & director and has written and directed various documentaries together with his first short fiction CITÉ (ALLEY) shot in 2010 and produced in Chile, that was selected in many festivals around the world. During his residency in France in 2011, he directed 3 short films in France (THE SUITCASE) as well as two short film in Canada (HOURS GET LOST IN VAIN). In 2013, in TAIPEI FACTORY's frame, he co-wrote and co-directed with Shen Ko-Shang (A NICE TRAVEL) a fiction short film, shot in Taiwan, and premiered in opening of the Director's Fortnight at Cannes Film Festival in 2013. He is currently developing his first feature VIVIR TU VIDA that was selected in « La Fabrique des Cinemas du Monde » at Cannes Film Festival 2012 and won the Producers Network Award at Buenos Aires Lab at BAFICI 2012.

IN THE GRAYSCALE

Lucho Films / Tan Tan Films

Script Rodrigo Norero

Producer Luis Cifuentes

Director Claudio Marcone

Original language Spanish

Country of Origin Chile

Casting Francisco Celhay / Emilio Edwards
Daniela Ramirez / Sergio Hernandez
Matías Torres / Marcial Tagle

Color / 98 minutes

OUTPLAY FILMS

Philippe TASCIA

Head of International Acquisitions & Sales

OUTPLAY - 20 rue Voltaire - 93100 Montreuil - FRANCE

Office : +33 1 48 57 49 97 - Cell : +33 7 77 79 75 20

e-mail : philippe@outplayfilms.com

www.outplayfilms.com